

Welcome to Ehime University

Where is Ehime University?	2
Matsuyama City : Life is good here!	3
Faculties	4
Graduate Schools	5
Tuition	6
Scholarships	7
Entrance examination	8
Services	10
Housing	12
Activities	14
Student Life	15



Where is Ehime University?



By plane:

- From Shanghai 1h 45min
- From Seoul 1h 35min~55min
- From Tokyo 1h 25min
- From Osaka 55min

Ehime University is located in Matsuyama City, Ehime Prefecture.

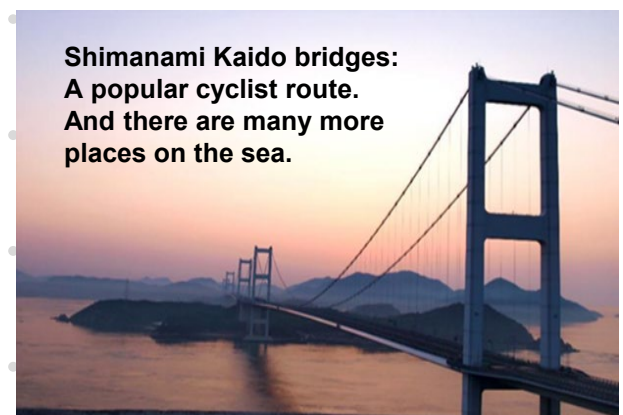
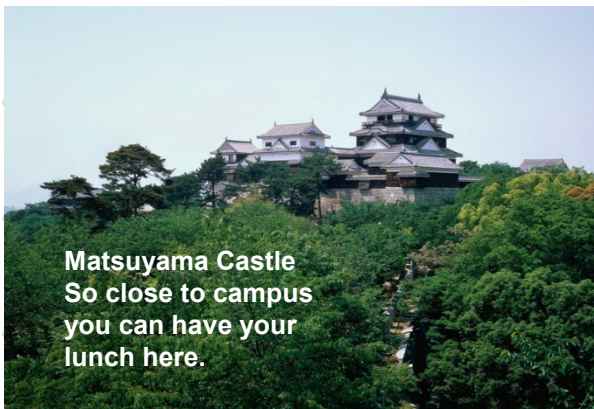
Osaka

Tokyo



Matsuyama City : Life is good for mind, body and your pocketbook!

- ☆ Housing: ¥20,000-40,000/month. (One of the lowest rates in Japan!)
- ☆ Everyday expenses : ¥40,000-60,000 /month
- ☆ Compact city so it is easy to get around.
- ☆ You only need a bicycle to get around – good for health!
- ☆ Only 30 minutes away from the mountains or the sea.



(Student's comment)
People in Matsuyama are kind and the city is clean.
Also cost of living is low.

(Student's comment)
It is a comfortable and peaceful place to be.
Wintertime temperature is normally above 0°C.



Academic Faculties

Law, Politics, Economics, Management,
 • Global studies, Literature, Linguistics, •
 History, Philosophy, Archaeology, Sociology,
 etc.

Faculty of Law and Letters

Humanities and Social Sciences

Faculty of Education

School Teacher Training Course
 Special Education Teacher
 Training Course

School education, Special education, etc.

Business Creation, Fisheries Science,
 Design and Manufacturing, Environmental
 Sustainability, Regional design and disaster
 prevention, Rural Area management, etc.

Faculty of Collaborative Regional Innovation

Industrial Management
 Industrial Innovation
 Environmental Design
 Regional Resource Management

Faculty of Science

Science

Mathematics, Physics, Cosmic Physics,
 Chemistry, Biochemistry, Biology, Ecology,
 Geoscience, etc.

Medical and Nursing Science, etc.

School of Medicine

Medicine
 Nursing and Health Sciences

Faculty of Engineering

Engineering

Mechanics, Construction, Architecture,
 Environment, Electronics, Information
 Science, Applied Engineering, Material
 Engineering, etc.

Biological Produce, Bio-mechanical
 systems, Resource Policy, Ecopolity,
 Applied Life Science, Forest Resources,
 Rural Engineering, Environmental
 Conservation, etc.

Faculty of Agriculture

Food Production Science
 Bioscience
 Science and Technology for Biological
 Resources and Environment



Graduate Schools

- Law and Letters
- Industrial Systems Management and Innovation

Humanities and Social Sciences(Master Course)

Graduate School of Education (Master Course)

- Advanced Professional Development in School Education (Professional School for Teacher Education)
- Division of Life Span Development and Clinical Psychology

- Science and Engineering

Graduate School of Science and Engineering (Science)

*This was reorganized in April 2023

Graduate School of Medicine

- Program for Medical Science (D)
- Program for Nursing and Health Sciences(M)

- Science and Engineering

Graduate School of Science and Engineering (Engineering)

*This was reorganized in April 2023

Graduate School of Agriculture (Master Course) The United Graduate School of Agricultural Science (Doctoral Course)

- Food Production Science (M)
- Bioscience (M)
- Science and Technology for Biological Resources and Environment (M)
- Special Course for International Students from Asia, Africa and the Pacific Rim (M)
- Bioresource Production Science (D)
- Applied Bioresource Science (D)
- Life Environment Conservation Science (D)
- Special Doctoral Program for International Students in Tropical and Subtropical Agriculture and Related Sciences (D)
- Special Doctoral Course Program in Agricultural Sciences for International Students from Asia, Africa and the Pacific Rim (D)

Integrated Medical and Agricultural School of Public Health (Master Course)



Tuition

■ Fees paid at enrollment (As of 2023)

Faculty	Admission Fee	Tuition Fee	Other Fees	Total
Faculty of Law and Letters	¥282,000	First Semester ¥267,900 [Annual Fee] ¥535,800	¥71,660	¥889,460
Faculty of Education			¥64,660	¥882,460
Faculty of Collaborative Regional Innovation			¥64,660	¥882,460
Faculty of Science			¥64,660	¥882,460
School of Medicine			¥155,800 (¥86,370)	¥973,600 (¥904,170)
Faculty of Engineering			¥64,660	¥882,460
Faculty of Agriculture			¥70,660	¥888,460

■ University campus



Entrance to the main campus



Cafeteria



There are also several cafes on campus.



Student lounges throughout the campus

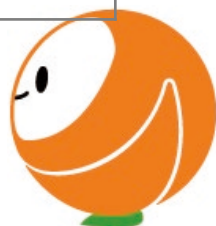


Many trees on campus



Scholarships

Name of Foundation Name of Scholarship	Designated Countries	Contents	Duration	Grante es
Ehime University Alumni Association 愛媛大学校友会	-	¥30,000 / M	4 months	6
Seki Houshi Foundation (公財)関奉仕財団	To be determined.	¥360,000 / Y	1yr (Apr.)	2
Matsuyama Saibi-kai (公財)松山済美会	-	¥15,000 / M	1yr (Apr.)	5
Kyoritsu International Foundation (一財)共立国際交流奨学財団 Kyoritsu Foundation Scholarship Kyoritsu Maintenance Scholarship/ Young Steel Scholarship	Asia	¥100,000 / M ¥60,000 / M	1yr (Apr.) 1yr (Apr.)	2
SGH Foundation (公財)SGH財団	Indonesia, Malaysia, Iran, Bangladesh, Turkey and other Islamic countries	¥120,000 / B・M ¥180,000/D	2yrs (Apr. – Mar.)	U1 M,D2
Sato Yo International Scholarship Foundation (公財)佐藤陽国際奨学財団	Indonesia, Singapore, Philippines, Malaysia, Brunei, Thailand, Viet Nam, Laos, Cambodia, Myanmar, India, Sri Lanka, Maldives, Pakistan, Nepal, Bhutan, Bangladesh, Timor-Leste	(U) ¥150,000 / M (M,D) ¥180,000 / M	Max 2yrs (range of a single degree course)	Undeci ded
JGC-S Scholarship Foundation (公財)日揮・実吉奨学会	-	¥300,000 / Y	1yr	1
Japan Education Exchanges and Services(JEES) (公財)日本国際教育支援協会		¥40,000 / M	2yrs	2
	Students from countries which send small number of students to Japan	¥50,000 / M	2yrs	Undeci ded
Heiwa Nakajima Foundation (公財)平和中島財団	-	¥100,000 / M	1yr	U1 M,D1
Rotary Yoneyama Memorial Foundation Inc. (公財)ロータリー米山記念奨学会	-	(U) ¥100,000 / M (M,D) ¥140,000 / M	1yr or 2yrs	9



Entrance Examination

Undergraduate
Students

Pre-arrival Admission for Privately Financed International Students

2024 Undergraduate Students

※Guidelines for applicants are released early in September.

<https://www.ehime-u.ac.jp/entrance/outline/international/>

Faculty of Science
Faculty of Engineering
Faculty of Agriculture

- ① EJU (Examination for Japanese university Admission for International Students) November, 2022 or June, 2023
- ② Contact each faculty by email (Around October, 2023)
- ③ Application Period (November 1-7, 2023)
- ④ Interview (Until November 26, 2023, It depends on the Faculty.)
- ⑤ Announcement (December 8, 2023)
- ⑥ Procedure for Entrance (December 18-28, 2023)
- ⑦ Entrance (April, 2024)

Undergraduate
Students

Admission for Privately Financed International Students

2024 Undergraduate Students

※Guidelines for applicants are released early in September.

<https://www.ehime-u.ac.jp/entrance/outline/international/>

- ① EJU (Examination for Japanese university Admission for International Students) June, 2023 or November, 2023
- ② Application Period (January 22-31, 2024)
- ③ Entrance Examination (February 25, 2024)
- ④ Announcement (March 6, 2024)
- ⑤ Procedure for Entrance (March 8-15, 2024)
- ⑥ Entrance (April, 2024)



Graduate School Application Process

Master's and
Doctoral Courses

Search for a supervisor to match your research goal.

<https://yoran.office.ehime-u.ac.jp/scripts/websearch/index.htm?lang=en>

1st

Search for a professor in your field

2nd

Check the professor's research topic & publications

3rd

Decide if this is what you want.

4th

Prepare your CV and research proposal

Send to the professor



Support Services

□ Tutor system



(Student's comment)

You may be worried about lots of things soon after arriving in Japan. But don't worry! International students are assigned tutors and they will help you.

(Student's comment)

Supervisor support your study and university life. When you come up against a difficulty, you can talk to them.



□ Support for employment in Japan



(Student's comment)

Ehime University offers employment support program for international students who would like to work in Japan. International students are able to join an internship program. Also, you can learn Japanese business manners. These classes could also be very helpful for students who are going to work in their own or another country. Teachers teach you how to write a CV and prepare for a company interview. You will be able to contact a company on your own as well.

More information → <http://ryupro.isc.ehime-u.ac.jp>

Point 1

Japanese Language skills

- Classes matched with your skills
- Special sessions for tech. students
- Business Japanese Test Prep.



Point 2

Career Consideration

- Business Internship
- Classes with Japanese students
- Company tours and events



Point 3

Job-hunting Preparation

- about Japanese style job-hunting
- Resumes & job interviews
- Support by career consultants



This is an additional program you can take during studying your own major in Ehime Univ./Grad. School.

90% of our program students who did job-hunting successfully got jobs!
(Year 2017-2018)



Other services



- **Free health consultation/free annual physical exam**
- **Free weight training gym**
- **General consultation services such as a study help desk**
- **Ehime Leaders School: leadership training**
- **Internship opportunities**
- **Project E: Funding provided for student projects**

*It depends on the situation of COVID-19.



***Housing:** There are university dorms but unfortunately there is not enough room for everyone. Luckily, private housing in Matsuyama is inexpensive.

Miyuki Dormitory



● To the Main Campus ●	
On foot	25 min
By bicycle	10 min
By streetcar	10 min

Apartment rent : ¥16,000~
(A section)
Management fee : ¥2,000

Monthly fee : ¥18,000~
*No day rate
Room cleaning : ¥43,000
*Paid when moving in



●Furnished with:
Kitchenette with IH burner, electric heater, fan, electric water heater, closet, curtains, desk, chair, bed, fridge, heating/air conditioning, internet and TV wire
*You will need to provide your own kitchen ware, bedding, towels, etc.
●Facilities : Cafeteria, Lounge, Laundry room



International House



● To the Faculty of Agriculture	
By bicycle	20 min
● To the main campus	
By bicycle	40min.

Apartment rent : ¥5,900
Management fee : ¥7,100

Monthly fee : ¥13,000
*No day rate

Room cleaning : ¥31,000
*Paid when moving in



Single Apartment



Family Apartment

● Furnished with:	
Heating/air conditioning, electric water heater, gas range, bed, closet, bookshelf, cupboard, table, chair, desk, fridge, desk lamp, washing machine, microwave	
*You will need to provide your own kitchen ware, bedding, towels, etc.	



Activities

※before COVID-19

International Student Party

Every April and October, welcome parties are held by AISA (Ehime University International Students Association). Every July, an International Student Party is held by AINECS (Association of International Exchange and Cooperation for Students in Ehime University).



ICO

ICO (International Coordinators) is a student group which plans events and provides many kinds of support for international students. International students are welcome to join!



Field Trips

Each year a field trip is planned by the university for international students to give them a chance to learn more about Japan and get to know the other students.



School Visits

International students visit Japanese schools to introduce their own countries and have exchange with the children.



Student Life



Mr. OPARA JONPAUL NNAMDI

-From Federal Republic of Nigeria

-Graduate School of Science And Engineering

► Good points about Ehime University

Teachers and students are friendly. Staff are kind and they help me when I have a problem. The campus is very clean. I can concentrate on the research so I would like to study more!

► Free time

I am currently busy with research, so I don't have a part-time job. But when I was in my master's course I worked at a hotel. Also I was an English teacher.

On my days off I go sightseeing to places I have never been before such as Kobe, Osaka and Kyoto.

► Impression of Japan

Since I was a child I had seen products made in Japan such as toys, TVs, and cars, so I was interested in Japan.

I also watched a lot of Japanese anime and manga, then I liked Japanese culture.

When I came to Japan, I was surprised to see how properly separated garbage is, how clean and well-organized it is.

I respect Japanese humble attitude even though they have high technology.

► Future

I am currently doing research on AI and computer design in my doctoral course so I would like to work in Japan as an international businessman in the future.

I hope to contribute to business that connects Japan and Africa.

► Housing

I rent an apartment and live alone. The rent is about ¥35,000/month. It's a little far from Johoku Campus, so I use bicycle.



► To Future Students

Please come!

Ehime university is beautiful and clean, the staff is friendly.





- Inquiries (Japanese/English/Chinese OK) ,
- Student Exchange Team, ,
- International Office, Ehime University ,
- Mail : kokuryu@stu.ehime-u.ac.jp ,
- URL : <http://web.isc.ehime-u.ac.jp>

