

Welcome to Ehime University

Where is Ehime University?	2
Matsuyama City : Life is good here!	3
Faculties	4
Graduate Schools	5
Support Services	6
Activities	7
Housing	8
Tuition	10
Scholarship	11
Entrance Examination	12
Student Life	14



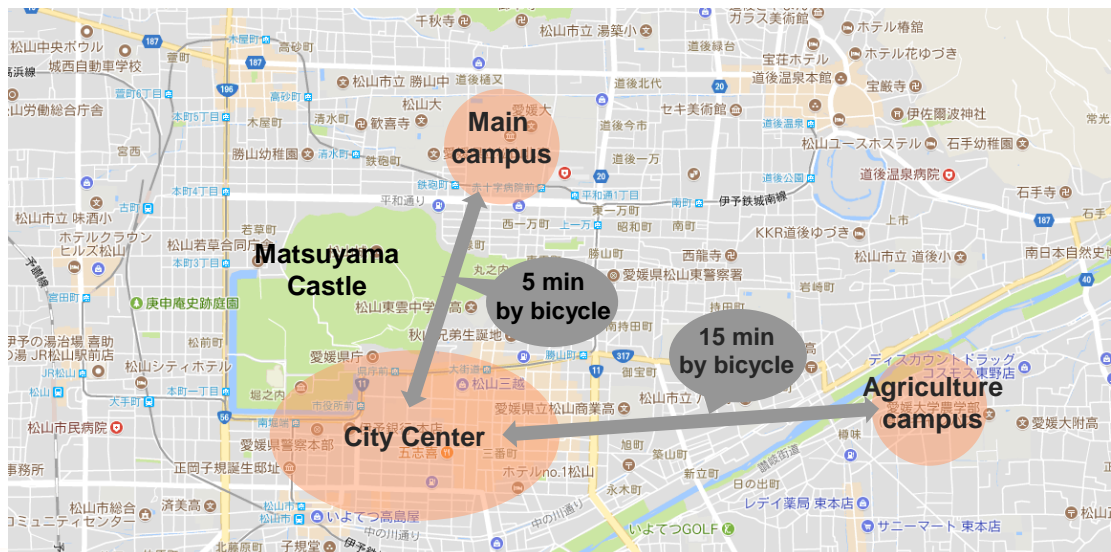
Where is Ehime University?



By plane:

- From Shanghai 1h 45min
- From Seoul 1h 35min~55min
- From Tokyo 1h 25min
- From Osaka 55min

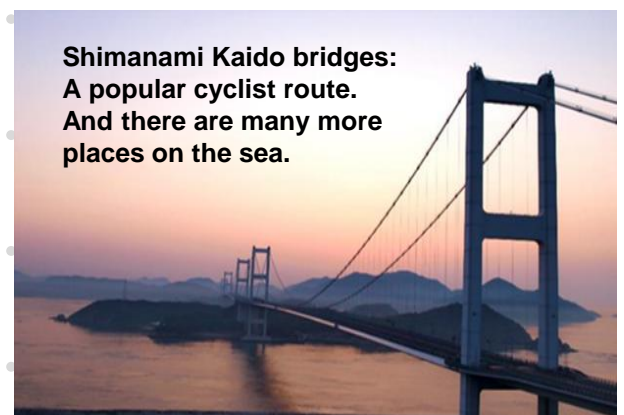
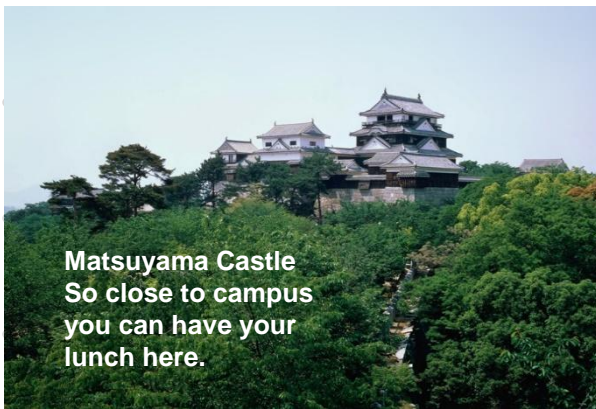
Ehime University is located in Matsuyama City, Ehime Prefecture.



Matsuyama City :

Life is good for mind, body and your pocketbook!

- ☆ Housing: ¥20,000-40,000/month. (One of the lowest rates in Japan!)
- ☆ Everyday expenses : ¥40,000-60,000 /month
- ☆ Compact city to it is easy to get around.
- ☆ You only need a bicycle to get around – good for health!
- ☆ Only 30 minutes away from the mountains or the sea.



(Student's comment)
People in Matsuyama are kind and the city is clean.
Also cost of living is low.

(Student's comment)
It is a comfortable and peaceful place to be.
Wintertime temperature is normally above 0°C.



Academic Faculties

Law, Politics, Economics, Management,
 Global studies, Literature, Linguistics,
 History, Philosophy, Archaeology, Sociology,
 etc.

21 international students

Faculty of Law and Letters

Humanities and Social Sciences

2 international students

Faculty of Education

School Teacher Training Course
 Special Education Teacher
 Training Course

School education, Special education, etc.

3 international students

Faculty of Collaborative Regional Innovation

Industrial Management
 Industrial Innovation
 Environmental Design
 Regional Resource Management

Business Creation, Fisheries Science,
 Design and Manufacturing, Environmental
 Sustainability, Regional design and disaster
 prevention, Rural Area management, etc.

9 international students

Faculty of Science

Science

Mathematics, Physics, Cosmic Physics,
 Chemistry, Biochemistry, Biology, Ecology,
 Geoscience, etc.

Medical and Nursing Science, etc.

School of Medicine

Medicine
 Nursing and Health Sciences

15 international students

Faculty of Engineering

Engineering

Mechanics, Construction, Architecture,
 Environment, Electronics, Information
 Science, Applied Engineering, Material
 Engineering, etc.

6 international students

Biological Produce, Bio-mechanical
 systems, Resource Policy, Ecopolity,
 Applied Life Science, Forest Resources,
 Rural Engineering, Environmental
 Conservation, etc.

Faculty of Agriculture

Food Production Science
 Bioscience
 Science and Technology for Biological
 Resources and Environment



Graduate Schools

10 master's students

Humanities and Social Sciences(Master Course)

- Advanced Professional Development in School Education (Professional School for Teacher Education)
- Division of Life Span Development and Clinical Psychology

- Law and Letters
- Industrial Systems Management and Innovation

1 master's students

Graduate School of Education (Master Course)

- Science and Engineering

0 master's students and 4 doctoral students

Graduate School of Medicine

Graduate School of Science and Engineering (Science)

- Program for Medical Science (D)
- Program for Nursing and Health Sciences(M)

9 master's students and 19 doctoral students

22 master's students and 21 doctoral students

Graduate School of Science and Engineering (Engineering)

- Science and Engineering

13 master's students and 35 doctoral students

Graduate School of Agriculture (Master Course)

The United Graduate School of Agricultural Science (Doctoral Course)

- Food Production Science (M)
- Bioscience (M)
- Science and Technology for Biological Resources and Environment (M)
- Special Course for International Students from Asia, Africa and the Pacific Rim (M)
- Bioresource Production Science (D)
- Applied Bioresource Science (D)
- Life Environment Conservation Science (D)
- Special Doctoral Program for International Students in Tropical and Subtropical Agriculture and Related Sciences (D)
- Special Doctoral Course Program in Agricultural Sciences for International Students from Asia, Africa and the Pacific Rim (D)

Integrated Medical and Agricultural School of Public Health (Master Course)

1 master's students

Interfaculty Graduate School of Regional Resilience

Support Services

Tutor system



(Student's comment)

You may be worried about lots of things soon after arriving in Japan. But don't worry! International students are assigned tutors and they will help you.

(Student's comment)

Supervisor support your study and university life. When you come up against a difficulty, you can talk to them.



Support for employment in Japan



(Student's comment)

Ehime University offers a well-structured program that students can take alongside their regular studies. The program includes various classes on career development & company experience, Business Japanese language & manners. Students can improve their Japanese skills, learn business manners, understand Japanese organizations and workplace culture, practice interviews, and gain practical experience through internships. Teachers provide guidance to help students define their goals and prepare for employment. The program is open to both international and Japanese students, creating opportunities for cultural exchange and a broader understanding of Japan and other countries.

More information → <http://ryupro.isc.ehime-u.ac.jp>

【What is Ryupro?】

Realize your dream of working in Japan! Ehime University's intensive program offers business Japanese, career education, and internships to fully support your job search. This is a program recognized by the Ministry of Education, Culture, Sports, Science and Technology (MEXT). High-achieving students may be eligible to receive scholarships.



Meeting with Companies



Career Education



Meeting with Alumni



Activities

International Student Party

Every April and October, welcome parties are held by AISA (Ehime University International Students Association). Every July, an International Student Party is held by AINECS (Association of International Exchange and Cooperation for Students in Ehime University).



ICO

ICO (International Coordinators) is a student group which plans events and provides many kinds of support for international students. International students are welcome to join!



Field Trips

A field trip is planned by the university for international students to give them a chance to learn more about Japan and get to know the other students.



School Visits

International students visit Japanese schools to introduce their own countries and have exchange with the children.



***Housing:** There are university dorms but unfortunately there is not enough room for everyone. Luckily, private housing in Matsuyama is inexpensive.

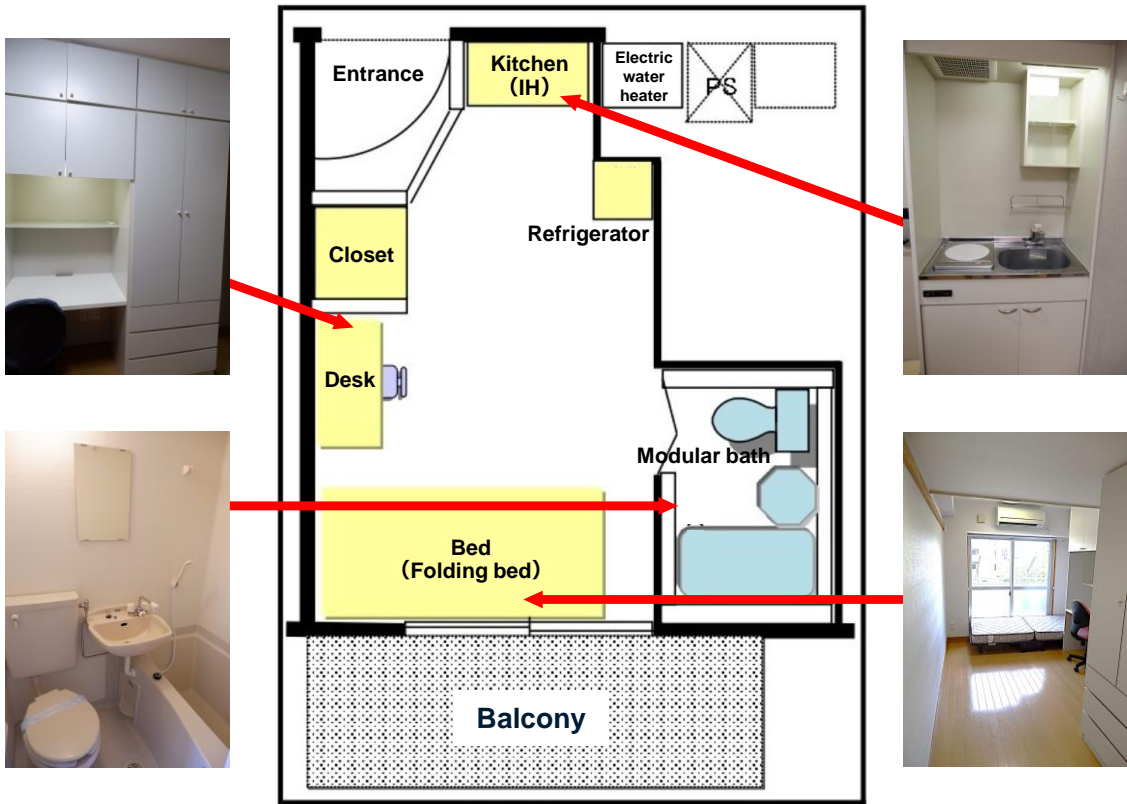
Miyuki Dormitory




● To the Main Campus ●	
On foot	25 min
By bicycle	10 min
By streetcar	10 min

Apartment rent : ¥16,000~
(A section)
Management fee : ¥2,000

Monthly fee : ¥18,000~
*No day rate
Room cleaning : ¥43,000
*Paid when moving in



	<ul style="list-style-type: none"> ● Furnished with: Kitchenette with IH burner, electric heater, fan, electric water heater, closet, curtains, desk, chair, bed, fridge, heating/air conditioning, internet and TV wire *You will need to provide your own kitchen ware, bedding, towels, etc. ● Facilities : Cafeteria, Lounge, Laundry room
---	---

International House

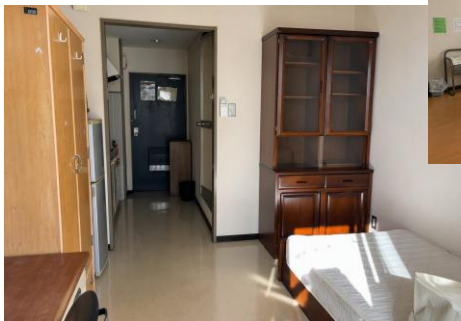


<ul style="list-style-type: none"> ● To the Faculty of Agriculture By bicycle 20 min ● To the main campus By bicycle 40min.

Apartment rent : ¥5,900
Management fee : ¥7,100

Monthly fee : ¥13,000
*No day rate

Room cleaning : ¥34,000
*Paid when moving in
*Cost of a Single Room



Single Apartment



Family Apartment

<ul style="list-style-type: none"> ● Furnished with: Heating/air conditioning, electric water heater, gas range, bed, closet, bookshelf, cupboard, table, chair, desk, fridge, desk lamp, washing machine, microwave *You will need to provide your own kitchen ware, bedding, towels, etc.



Tuition

□ Fees paid at enrollment (As of 2026)

Faculty	Admission Fee	Tuition Fee	Other Fees	Total
Faculty of Law and Letters	¥282,000	First Semester ¥267,900 [Annual Fee] ¥535,800	¥64,660	¥882,460
Faculty of Education			¥64,660	¥882,460
Faculty of Collaborative Regional Innovation			¥64,660	¥882,460
Faculty of Science			¥64,660	¥882,460
School of Medicine			¥155,800 (¥86,370)	¥973,600 (¥904,170)
Faculty of Engineering			¥64,660	¥882,460
Faculty of Agriculture			¥70,660	¥888,460

□ University campus



Entrance to the main campus



Cafeteria



There are also several cafes on campus.



Student lounges throughout the campus

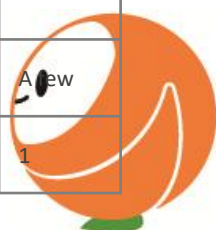


Many trees on campus



Scholarships

Name of Foundation Name of Scholarship	Designated Countries	Contents	Duration	Grantees
Ehime University Alumni Association 愛媛大学校友会	-	¥30,000 / M	4 months	6
Seki Houshi Foundation (公財)関奉仕財団	To be determined.	¥360,000 / Y	1yr (Apr.)	2
Matsuyama Saibi-kai (公財)松山済美会	-	¥15,000 / M	1yr (Apr.)	5
Rotary Yoneyama Memorial Foundation Inc. (公財)ローレル-米山記念奨学会	-	(U) ¥100,000 / M (M,D)¥140,000 / M	1yr or 2yrs	8
Heiwa Nakajima Foundation (公財)平和中島財団	-	(U) ¥120,000 / M (M,D) ¥150,000 / M	1yr	U:1 M,D:1
Fujii International Scholarship Foundation (公財)藤井国際奨学財団	Asia	¥50,000 / M	Max 3yrs	A few
Iwatani Naoji Foundation (公財)岩谷直治記念財団	East Asia Southeast Asia	¥150,000 / M	Max 2yrs	Undecided
Sato Yo International Scholarship Foundation (公財)佐藤陽国際奨学財団	Southeast Asian countries Southwest Asian countries	(U) ¥180,000 / M (M,D)¥200,000 / M	Max 2yrs (range of a single degree course)	Undecided
Yasuda Scholarship Foundation (公財)安田奨学財団		¥100,000 / M	Max 3yrs	2 / faculty
Kyoritsu International Foundation (一財)共立国際交流奨学財団	Asia	¥110,000 / M	1yr (Apr.)	2
Kyoritsu Maintenance / Young Steel Scholarship		¥70,000 / M	1yr (Apr.)	
SGH Foundation (公財)SGH財団	Southeast Asian countries	¥120,000 / U · M ¥180,000/D	2yrs (Apr. – Mar.)	U:2 M,D:3
Monbukagakusho Honors Scholarship for Privately-Financed International Students JASSO学習奨励費	-	¥48,000 / M	1yr	A few
JGC-S Scholarship Foundation (公財)日揮・実吉奨学会	-	¥400,000 / Y	1yr	1
Japan Education Exchanges and Services(JEES) (公財)日本国際教育支援協会	Study Support	¥50,000 / M	2yrs	1
	Students from countries which send small number of students to Japan	¥50,000 / M	2yrs	3
Taiyo Oil Scholarship 太陽石油株式会社	-	¥500,000 / Y	1yr	A few
Yamaoka Scholarship Foundation (公財)山岡育英会	Asia	¥100,000 / M	2yrs	1



Entrance Examination

Undergraduate Students

Pre-arrival Admission for Privately Financed International Students

2026 Undergraduate Students

※Guidelines for applicants are released in early September.

<https://www.ehime-u.ac.jp/entrance/outline/international/>

Faculty of Science
Faculty of Engineering
Faculty of Agriculture

- ① EJU (Examination for Japanese university Admission for International Students) November,2024 or June,2025
- ② Contact each faculty by email (Around end of September,2025)
- ③ Application Period (November 1-7,2025)
- ④ Interview (Until November 23,2025, It depends on the Faculty.)
- ⑤ Announcement (December 5,2025)
- ⑥ Procedure for Entrance (December 5-22,2025)
- ⑦ Entrance (April,2026)

Undergraduate Students

Admission for Privately Financed International Students

2026 Undergraduate Students

※Guidelines for applicants are released in early September.

<https://www.ehime-u.ac.jp/entrance/outline/international/>

- ① EJU (Examination for Japanese university Admission for International Students) June,2025 or November,2025
- ② Application Period (January 26-February 4,2026)
- ③ Entrance Examination (February 25-26,2026)
- ④ Announcement (March 6,2026)
- ⑤ Procedure for Entrance (March 6-15,2026)
- ⑥ Entrance (April,2026)



Graduate School Application Process

Graduate School

□ Graduate School Special Selection for International Applicants

Master's Program <https://www.ehime-u.ac.jp/entrance/graduate/master-2/>

Doctoral Program <https://www.ehime-u.ac.jp/entrance/graduate/entrance-55875-2/>

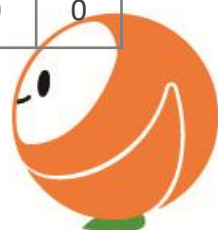
- ① Find a prospective academic supervisor at Ehime University Researcher Directory <https://researchers.office.ehime-u.ac.jp>
- ② Contact the academic supervisor
- ③ Application
- ④ Selection Examination
- ⑤ Announcement of Successful Applicants
- ⑥ Enrollment Procedures
- ⑦ Enrollment

□ Admission Statistics for Privately Financed International Students(2025AY)

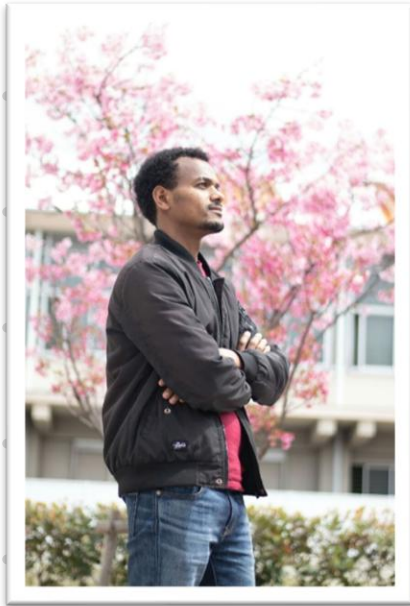
Admission Capacity	Application			Examinees			Successful Applicants			Enrollment		
	Male	Female	Total	Male	Female	Total	Male	Female	Total	Male	Female	Total
A Few	44	23	67	30	17	47	6	4	10	4	4	8

□ Admissions Statistics for Privately Financed International Students under the Pre-Arrival Admission System (2025AY)

Admission Capacity	Application			Examinees			Successful Applicants			Enrollment		
	Male	Female	Total	Male	Female	Total	Male	Female	Total	Male	Female	Total
A Few	2	1	3	2	1	3	0	1	1	0	0	0



Student Life



Mr. GERENCHEAL TEKLAY ASMELASH
-From Federal Democratic Republic of Ethiopia
-Graduate School of Science And Engineering

► Educational background

My journey began at Wuqro Maray High School in Tigray, Ethiopia, where I first encountered Japan's excellence in technology. The laboratory equipment provided by JICA sparked my interest in Japan's innovation and quality. I earned my Bachelor's degree in Electrical and Electronics Engineering at Mekelle Institute of Technology, where my fascination with Japan deepened. Later, I pursued my Master's degree in Mechanical Engineering at Ehime University in the same laboratory where I now continue my PhD. My experience during my Master's studies solidified my decision to further my education here, as I gained invaluable knowledge and mentorship in the Robotics and Intelligent Systems Laboratory.

► Classes and Laboratory Experience

My research focuses on robotics, and the collaborative environment in the lab motivates me every day. The hands-on learning approach at Ehime University has enriched my academic experience.

► Residence

The accommodation here is clean, beautiful, and affordable, making it an ideal place for international students to live comfortably while focusing on their studies.

► Why Ehime University?

I chose Ehime University for its world-class robotics program and its serene environment, perfect for focused research. The Robotics and Intelligent Systems Laboratory, where I am currently pursuing my PhD, provides access to state-of-the-art facilities and highly supportive professors who guide us to excel in our studies.

► Exploring Ehime

Ehime offers countless opportunities to explore Japan's rich culture and natural beauty. I spend my holidays hiking, cycling, and visiting historical sites, including Matsuyama Castle and Dōgo Onsen. It's a wonderful balance between academic and personal life.

► Future Aspirations

One unique aspect of Japan is its well-organized job-hunting system, which begins almost a year before graduation. It's an incredible opportunity to plan ahead, network, and secure a fulfilling career. I dream of contributing to the field of robotics while living and working in Japan.

► A Message do Future International Students

Ehime University is more than just an institution; it's a community that supports you academically and personally. If you are looking for quality education, meaningful cultural experiences, and a supportive environment, this is the place to be. Come and join us in shaping the future, Ehime is home! Discover Ehime University Today!

With its vibrant student life, top-tier research opportunities, and rich cultural surroundings, Ehime University is the perfect destination for international students to thrive.





- Inquiries (Japanese/English/Chinese OK) •
- Student Exchange Team, •
- International Office, Ehime University •
- Mail : kokuryu@stu.ehime-u.ac.jp •
- URL : <https://web.isc.ehime-u.ac.jp> •

